



Hydra STREAM 1/2/3

AQUATIC DEPURATOR

- Breaks Down Protein and Nutrients
- Detoxify Ammonia (NH₃) & Nitrite (NO₂⁻)
- Create and Maintain Safe and Stable Pristine "Hydro-Pure Water"
- Marine & Freshwater



Instruction Manual

UNVEILING THE WORLD'S FIRST AQUATIC DEPURATOR

Powered by HYDRO-PURE TECHNOLOGY

What is Hydro–Pure Technology?

Hydro–Pure Technology is a patented water detoxifying and depurating technology for applications in both Marine and freshwater Aquatic Hobby. It consists of two electro–plates to energize a cartridge box containing special Cata–pure Catalyst Media to generate strong reactive Hydroxyl radicals (•OH), which is the key to the detoxifying and depurating reactions process.

What is the working principle and benefits of Hydro–Pure Technology?

Hydro–Pure Technology creates safe and stable pristine "Hydro–Pure Water" similar to that of natural river stream rich in micro nutrients and minerals.

By constantly pushing the ionization of toxic Ammonia NH₃ into non–toxic Ammonium NH₄⁺, it thus greatly prevents fish kill due to toxic Ammonia. Ammonium cannot be absorbed into the fish gills. It also helps to oxidize toxic Nitrites NO₂⁻ to non–toxic Nitrates NO₃⁻, keeping it stable and at a safe level.

With continuous usage, the Total Ammonia Nitrogen (NH₃ and NH₄⁺) will eventually become free Nitrogen N₂ and water H₂O.

Hydro–Pure Technology can also prevent cloudy water by the ionization of solid precipitation present in the waters. It also removes bad smell by the oxidization of Sulphur–based products which causes smell in the water.

Suitable Applications

Hydro–Pure Technology is suitable for marine and freshwater fish tanks of all sizes, all types of fishes, plants and live corals and all levels of stocking density. It also helps in the prevention of "New Tank Syndrome" especially in Marine tanks application. Also suitable for all applications that requires pristine water condition of safe and stable level of Ammonia, nitrites and nitrates acceptable for aquatic life.

Frequently Asked Questions about Hydro–Pure Technology Products

1. Why does my Ammonia Test Kit read high levels of Ammonia after using the Hydro–Pure Technology products?

Do not panic. Most Ammonia Test Kits in the market measures Total Ammonia Nitrogen (TAN). They measure the total sum of toxic Ammonia (NH₃) and non–toxic Ammonium (NH₄⁺) in the water. Hydro–Pure Technology detoxifies Ammonia (NH₃) by constantly pushing the ionization of toxic Ammonia NH₃ into non–toxic Ammonium NH₄⁺, thus greatly preventing fish kill due to toxic Ammonia. Therefore, it is normal that these test kit results in high readings as they measure total sum of toxic Ammonia (NH₃) and non–toxic Ammonium (NH₄⁺). Research has also shown that most aquatic plants are able to take in Ammonium directly for their nitrogen requirements.

2. Why does Nitrate NO₃⁻ level rises slightly during the initial phase of using the Hydro–Pure Technology products?

Hydroxyl radicals are more reactive to Ammonia and Nitrites and may be oxidized to become Nitrates. If the initial amount of nutrients, Ammonia NH₃ and Nitrite NO₂⁻ in the water is higher, they will be oxidized first, to become Nitrate NO₃⁻. Therefore, there may be is an initial rise of Nitrates, but

3. Phosphate Test Kit may read same level of Phosphate PO₄ after using Hydro–Pure Technology products.

Aquarium water contains both organic and inorganic form of Phosphate PO₄. Hydro–Pure Technology has the capability to reduce organic Phosphate, especially in marine tank. However, Phosphate Test Kits available in the market are only able to test inorganic Phosphate. Algae only use organic Phosphate, so some algae and Cyanobacteria might be reduced due to lesser organic Phosphate.

4. What is the usage life of the Cata–pure?

The Cata–pure media can be continuously used for up to 12months. Regular interval of washing and rinsing is necessary to remove dirt within the cartridge. Replace the cartridges after every 12months for maximum performance.

5. Is the Cata–pure made of just Activated Carbon/ Charcoal?

The Cata–pure is a carbon based media that has been specially formulated with metallic additives to work with Hydro–Pure Technology. Replacing Cata–pure with Activated Carbon will not work, and may even cause damage to the unit.

6. Why does one of the electro–plate's surface turns brownish?

It is normal that one of the electro–plate's surface will becomes brownish, due to the chemical reaction deposits. Please clean the electro–plate's surface during maintenance.

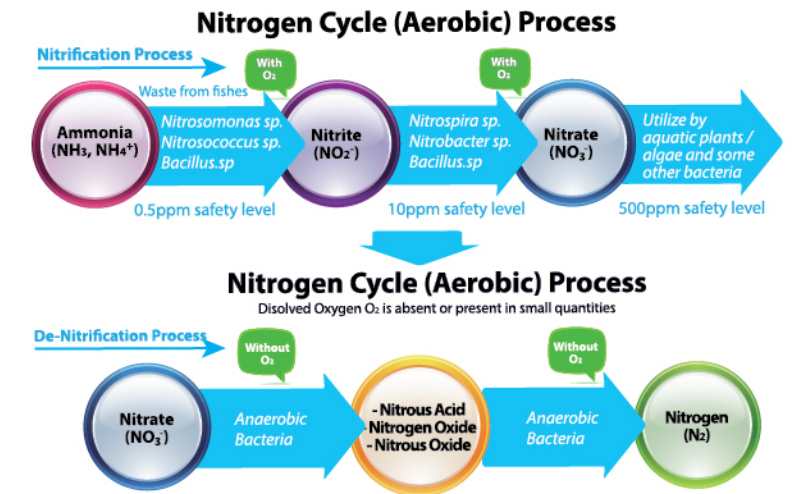
7. Can Hydro–Pure Technology be used for Planted Tank Setup?

Yes. A well balance nitrogen cycled planted tank may develop algae in the first few days of using Hydra due to the fast depletion of nutrients. It is advisable to partially change about 10% of the water to prevent algae growth. Hydra will stabilize the water quality thereafter.

8. Effects of Hydro–Pure Technology on fish medications and long term usage.

It is ok to switch on Hydro–Pure Technology continuously. It will not affect the inhabitants inside the aquarium. When using fish medication, it is advisable (but not compulsory) to switch off the power of the Hydra stream. For Hydra Aquatic Depurator, you may remove the cartridge. Hydro–Pure Technology will reduce the effects of medication.

Traditional Nitrogen Cycle Process



Hydra STREAM

AQUATIC DEPURATOR



Hydro-Pure Technology Process



Constantly breaks down Protein, detoxifies Ammonia (**NH₃**) and Nitrite (**NO₂⁻**), reducing overall level of organic nutrients much faster than normal biological filtration. This constant detoxification process results in biologically clean and safe pristine water quality for your fishes, maintains water quality effectively thus reducing frequency of water change.

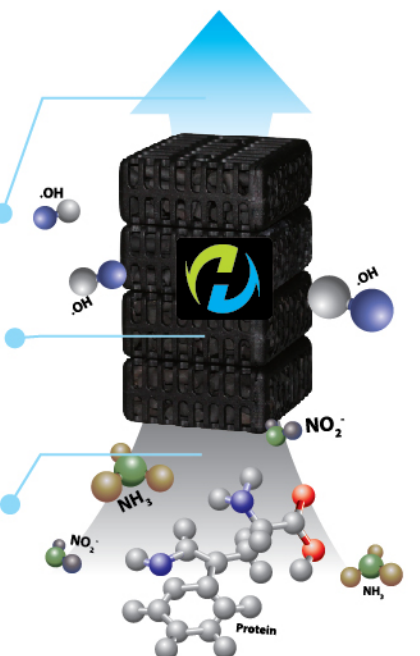
Hydro–Pure Technology Processes (The 3 Phases)

Maintains water quality effectively thus reducing frequency of water change.

Phase 3
• Biologically clean and healthy water for fish and invertebrates

Phase 2
• Cata-pure Media reaction produces reactive Hydroxyl Radicals (•OH) from water
• Hydroxyl Radicals (•OH) reduces Protein, toxic wastes, e.g. Ammonia (NH₃) and Nitrite (NO₂⁻), and odour from Sulphur-based by-products

Phase 1
• Aquarium water containing Protein, Ammonia (NH₃) and Nitrite (NO₂⁻)



Technical Specifications

Pump not included

Model	Recommended Flow Rate L/h	Optimum Volume Of Water That Can Be Treated (L)	Power (W)	Cata-pure	Diameter x H (mm)
Hydra Stream 1	300~1000	For Tank < 300L	1.1W	4pcs	Ø85 x 295
Hydra Stream 2	500~2000	For Tank < 600L	1.3W	6pcs	Ø85 x 335
Hydra Stream 3	800~3000	For Tank < 1000L	1.5W	8pcs	Ø85 x 375

The Hydra Stream is the world’s first Aquatic Depurator powered by Hydro–Pure Technology. It greatly improves your existing aquatic filtration system by enhancing the natural filtration and detoxification processes by more than 50%. This constant detoxification process results in biologically clean and safe pristine water quality for your fishes, maintains water quality effectively thus reducing frequency of water change.

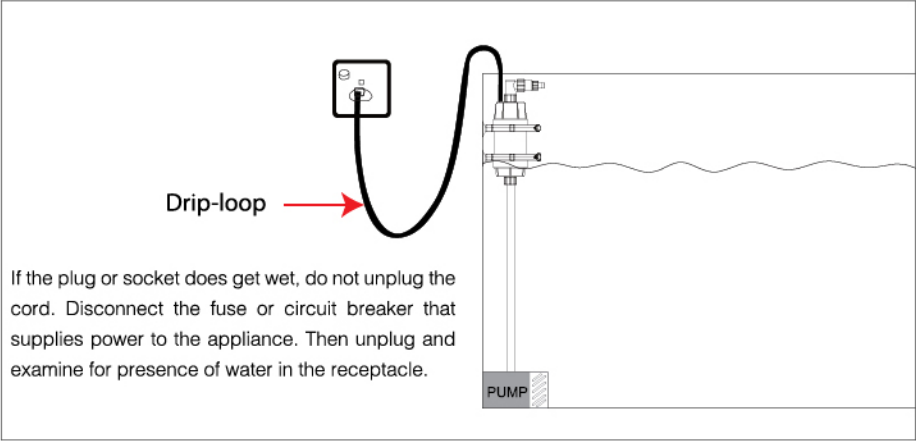
The Hydra can be used in both marine and freshwater tanks.

Safety measures:
Do not use this device during any medication treatment .
This product is for Aquarium use only.

Safety Usage Instructions

Warning–To guard against injury, basic safety precautions should be observed, including the followings:
Danger–As a safety precaution,always turn power off during maintenance or before any contact with water.For each of the following situations, do not attempt any repairs by yourself. Return the appliance to an authorized service facility for service or discard the appliance to avoid hazards:

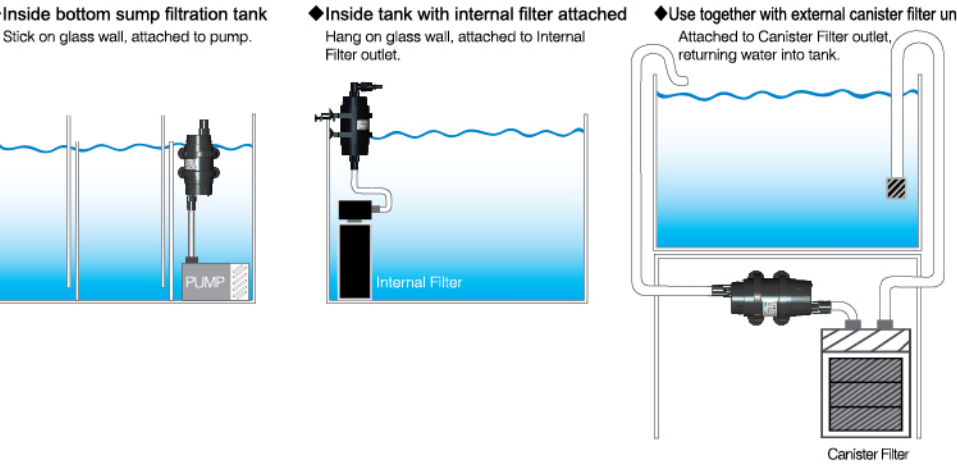
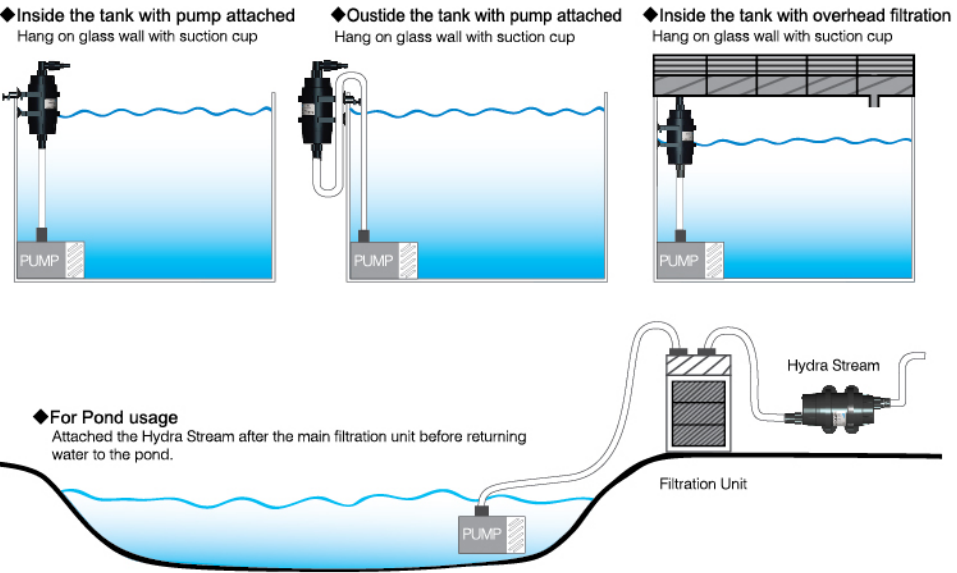
- Once found it has any water leakage, please power off immediately.
 - Do not operate any appliance if it has a damaged cord or plug, if it is malfunctioning or has been dropped or damaged in any way.
- a). Please understand and comply with all safety instructions.
b). The maximum operating depth of this appliance is 1M.
c). The maximum inlet water pressure of this appliance is 40 Kpa.
d). Ensure that the appliance is fixed firmly before operating it.
e). Carefully examine the appliance after installation. To avoid electric shock, plug in the power only with dry hands. If you find the plug is wet, do not to plug in the power directly. Please dry it completely first before plug in.
f). Always unplug an appliance from the power outlet when not in use or when making any adjustments or maintenance work. Never pull on the cord to remove the plug from the socket. Instead, grasp the plug and pull to disconnect.
g). This product is designed for indoor use only. The allowable environment operating temperature is from 0 to 55 degrees centigrade.
h). Do not use this appliance other than for the intended use.
i). Not recommended to be use with other brands of accessories as it may cause an unsafe condition.
j). If an extension cord is necessary, a cord with proper rating should be used. A cord rated for less amperes or watts than the appliance’ s rating may cause the cord to overheat and burn. Care should be taken to arrange the cord so that it will not be tripped over or pulled.
k). A ‘drip-loop’ ,shown in the figure below, should be arranged by the user for each cord connecting an aquarium appliance to the receptacle. The ‘drip-loop’ is the part of the cord below the level of the receptacle, or the connector if an extension cord is used, to prevent water travelling along the cord and coming in contact with the receptacle.
l). Close adult supervision is necessary when any appliance is used by young children.
m). Please note that the Cata–Pure Cartridge is NOT ACTIVATED CARBON/CHARCOAL, do not attempt to replace this cartridge with activated carbon/charcoal, otherwise it will damage the equipment.



IMPORTANT INFORMATION:

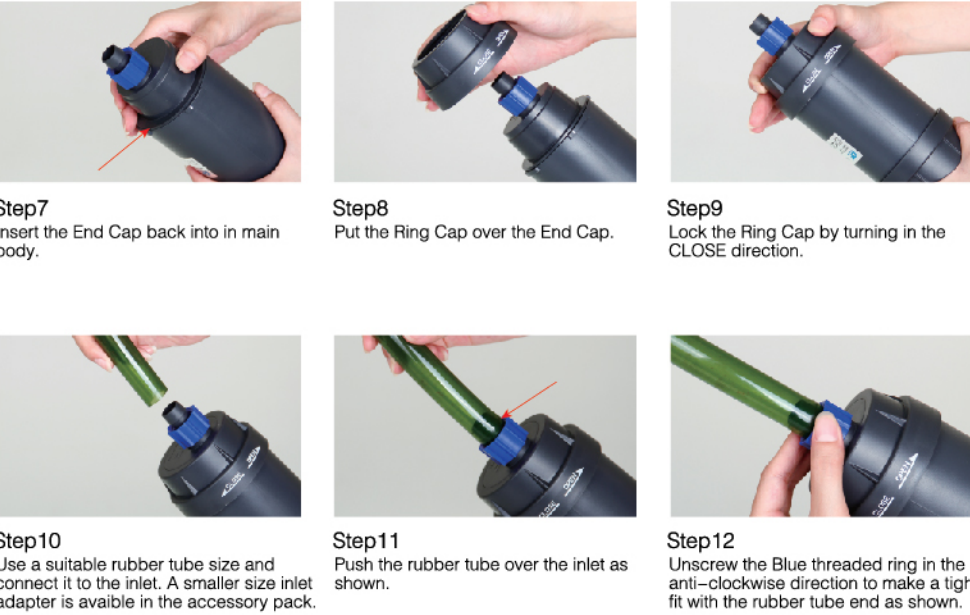
Hydra Stream is powered by Hydro–Pure Technology, a state–of–the–art technology developed by Qian Hu Corp for aquarium use. Cata–pure Cartridge is the active Hydro–Pure media that drives the whole system. THIS IS NOT ACTIVATED CHARCOAL OR CARBON , thus do not replace this with any other media other than the one purchased from our authorized dealer. Any incorrect replacement will result in inactivation of the Hydro–Pure system.

Various ways to use the Hydra Stream



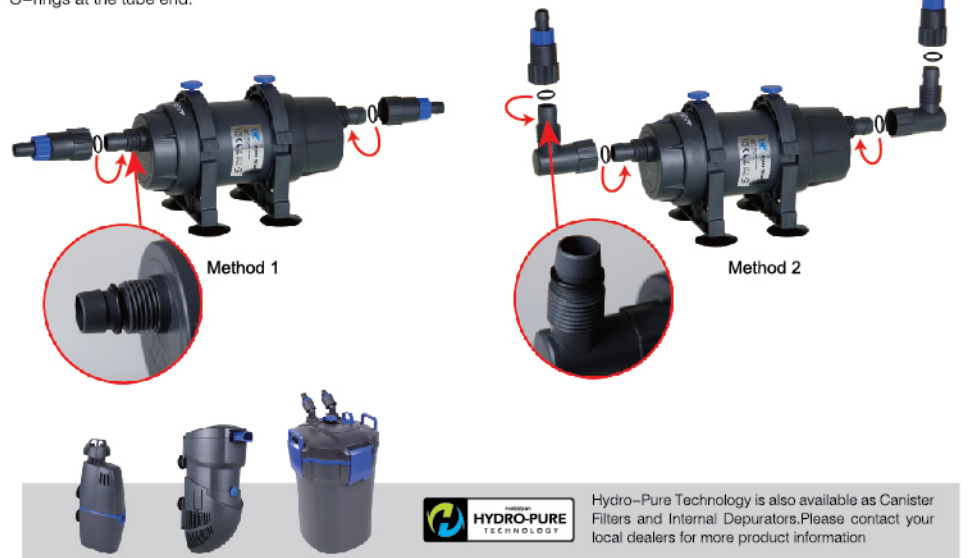
General Maintenance of the Cata–pure Cartridge

To keep your Hydra at optimum functioning level, rinse and wash the Cata-pure Cartridge to prevent any clogging or blockages (depending on the organic loading, on average you may want to wash the Cartridge once a month or when the flow is decreasing significantly). Follow the steps as shown below accordingly to remove the Cata-pure Cartridge, in reverse to place back the cartridge.



Instructions on using the inlet adapters

Note: When using the adapter, please put the rubber O–ring over the inlet as shown to prevent leakage. Do not use the rubber O–rings at the tube end.



Another quality product from:
Yi Hu Fish Farm Trading
(a subsidiary of Qian Hu Corporation Limited)
71, Jalan Lekar, Sungei Tengah, Singapore 698950.
Fax: (65) 67647077 e-mail: yihufish@qianhu.com
<http://www.yihufish.com>

